



HOÖKE COURT



Hill View Primary

Wednesday 12th –Friday 14th July 2023

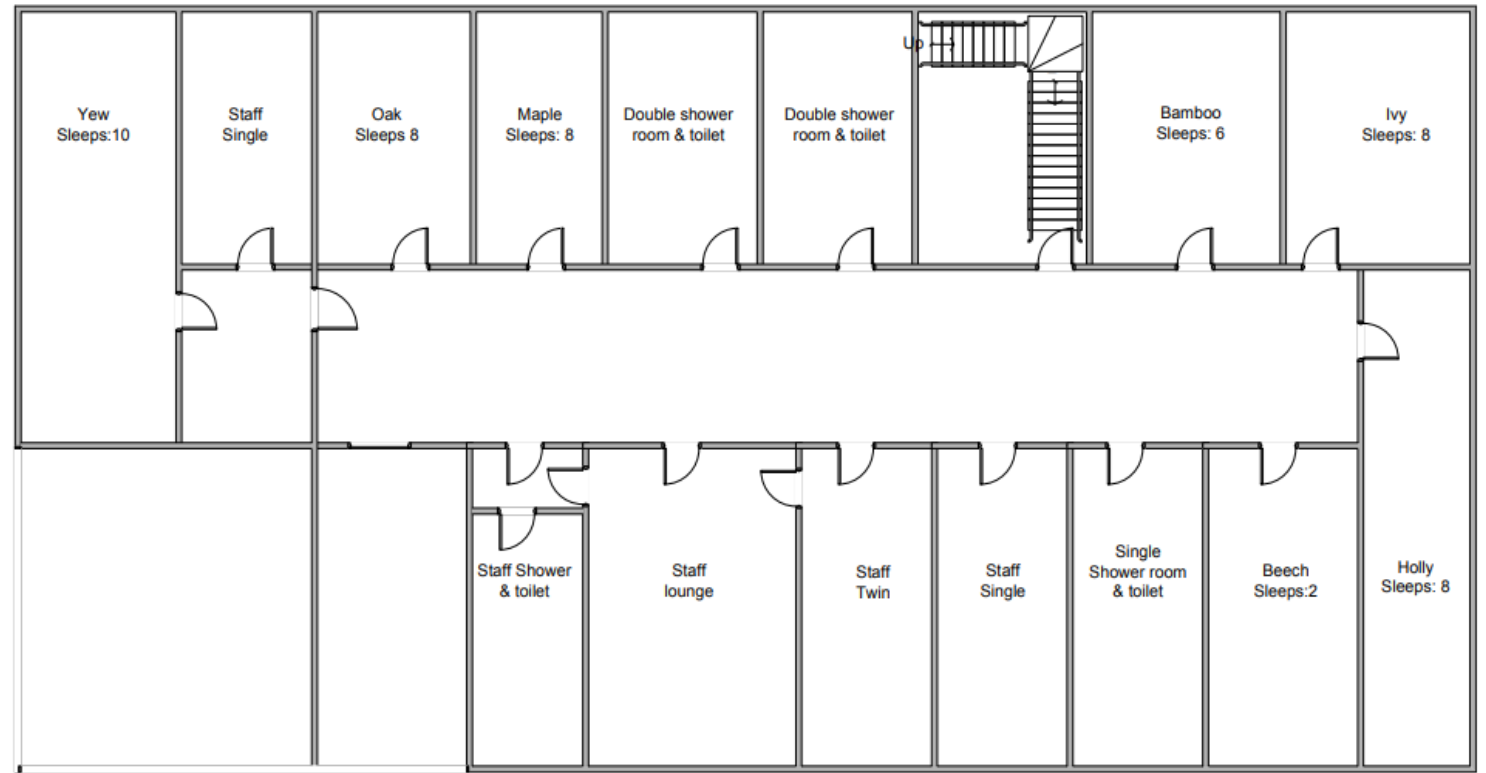


Accommodation

- There are two sets of buildings that are identical and pupils will be given the chance to choose who they room with.

No camping on this occasion.

All bedding is provided.



Ground Floor

- 1 Staff twin bedroom
- Kitchenette
- Students common room
- Double Shower room with 2 toilets
- Cloakroom

Food

- All dietary requirements are catered for. From vegan, vegetarian to celiac concerns.
- The earlier we know, the more we can do to cater for individual requirements.
- Medical and dietary requirements will be sent out as a gathering exercise 8 weeks prior.

Fussy children:

- As much as we will endeavour to support pupils whilst away, we would ask that they are encouraged to try a range of different fruits and vegetables in advance. We do not want anyone to go hungry.

Activities

- Shelter building
 - Bridging the moat
 - Nightline
 - Mud-run
-
- Please provide sun-cream but bear in mind that some sun-cream is nut-oil based.

Clothing

Please use the following checklist to help pack bags:

- Toiletries bag containing: toothbrush, toothpaste, soap, hairbrush etc (no aerosols)
- Towels
- Night clothes
- Socks and underwear
- T-shirts, shirts / blouses (at least 1 with long-sleeves)
- Thick sweater or sweat shirt, lighter sweater for inside
- Trousers, jeans, tracksuit bottoms, shorts or skirts as required
- Waterproof jacket (and trousers if you have them)
- Sturdy shoes or wellingtons – necessary all year round for outside activities
- 2 Pairs of trainers (one old pair that can get wet)
- Cuddly toy
- Large plastic bag for dirty clothes
- Gloves, hat, scarf (in winter)
- Sun hat and cream (in summer)
- Water Bottle
- Disposable Camera
- Lunch on day of arrival

Risk Assessments and adults

- All activities are Risk Assessed in a clear and detailed manner
- All aspects of site movement is also clearly Risk Assessed.

- Adults:

All the adults in attendance are subject to enhanced DBS scrutiny as per school policy.

We will work on a ratio of 1:10 for pupil support. We will endeavour to ensure that both male and female staff are in attendance to support as required.

First Aid and medicines

- We will also be taking 2 paediatric qualified first aiders from our own staff to support the centre should this be required.
- All medicines will need to be submitted on the day under a fresh “pink form” as these are being removed from site so we require your authorisation and as such, their administration to your child.

Non-attendeess

- Those who choose not to attend will be supported and taught in school, where they will be doing activities that are as close to Hooke Court style as possible.
- We do not want those who cannot attend to feel they are left out.

Extra thoughts

- We have included a few updates for you:
- A packed lunch for Wednesday 12th July will be required. If you use hot meals, please order as you would for a normal school trip.
- Please ensure that your child knows how to make their own bed (sheet/pillow/duvet). Staff will help but naturally cannot do 60+ beds.
- Boys and girls will sleep in single gender rooms on separate floors.
- Please ensure that pupils are aware of how to wash and dry themselves independently. It would be worth those with long hair wash it thoroughly before going as drying facilities are limited.
- The “own activities” will be activities facilitated by Hill View Staff.
- For the “Mud Run”, please ensure that pupils have got an extra change of clothes and shoes. These items need to be either put into a bin/plastic bag after the activity or potentially disposed of when the pupils return. This activity is very messy and the mud is renowned for sticking to clothing.
- We know our pupils well and how they can represent our school and themselves brilliantly. If however behaviour does fall short, we do reserve the right for the safety of the entire party to call you to collect them, irrespective of the time.
- We should arrive back at school ready to dismiss as usual.