

# Rockin' Rhymes ☺

**Monday 18<sup>th</sup> September – Friday 13<sup>th</sup> October**

The first two weeks of school will be a chance for your child to settle in and for us to complete baselines and assessments. This project will begin w/c 18<sup>th</sup> September (**First Full Week**). Your child will be given a task to complete each week throughout the project.

## Task 1

**Due w/c 18<sup>th</sup> September**

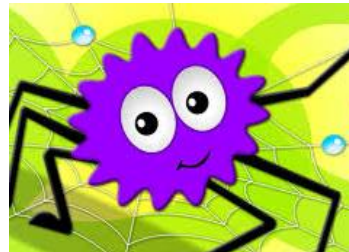
Go to the local library and find some Nursery Rhyme books to read with a grown up. ☺



## Task 2

**Due w/c 25<sup>th</sup> September**

Make a puppet of your favourite rhyme character and bring into school to share with your friends and use for your performance.



## Task 3

**Due w/c 2<sup>nd</sup> October**

Choose your favourite nursery rhyme and record yourself performing it on Tapestry! You might want to use props or dress up.

## Task 4

**Due w/c 9<sup>th</sup> October**

Children to practice the rhymes ready for nursery rhyme performance to parents. Children to come in dressed as their favourite nursery character for the performance.