



# Hill View Primary School

## Reach For The Stars

Newsletter No. 02 w/c 09/09/24



### Coming Up w/c 16<sup>th</sup> September

Friday 20<sup>th</sup> – Y4 Hawking Class Swimming

### Reminders

Whole school - **Life Bus Payment** £4 per child online through [WisePay](#) by 9am on Friday 20<sup>th</sup> September

**Whole School - Hot School Meals (Forerunner)**  
Please click here for the [Autumn Term Menu](#).  
Hot school meals must be ordered by midnight on Mondays for the following week.

### Pupil Absence



If your child is going to be absent from school, please contact the school office:

**Tel:** 01202 514109

**E-mail:** [office@hillview.bournemouth.sch.uk](mailto:office@hillview.bournemouth.sch.uk)

If leaving a message or sending an e-mail, please give the child's name & Class/Year Group. We are required to record the **Reason for their Absence**. We need specific details rather than just "unwell". [Please let us know your child's specific symptoms](#) e.g. temperature, cold/flu symptoms, vomiting etc. Providing these details will prevent us calling you.

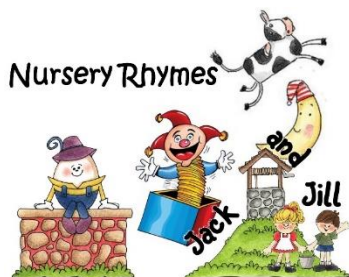
Please note that if your child has any sickness and/or diarrhoea, they must stay away from school for 48 hours from their last bout.

Please refer to the [NHS website](#) for further advice regarding whether to keep your child away from school if they are unwell.

## Year R Update

Wow! What a fantastic first week EYFS have had. The children have been amazing and have settled beautifully into school. They are learning the rules and routines very quickly and there have hardly been any tears. We have been exploring our classroom and the quad – which the children have loved.

EYFS are going to start learning all about 'Rocking Rhymes' and performance poetry. The children will be learning lots of the familiar rhymes to perform to their parents on 10<sup>th</sup> October.



The children have also been given some jobs to complete at home as part of this project, including puppet making and recording their favourite nursery rhyme. We cannot wait to see your puppet creations and display them in our classrooms!



We are also really excited to be going on our first school trip to the pantomime in December. It's going to be magical and we cannot wait! 😊



Mrs Burton, Mrs Jenner and Miss Porter

# PTFA Fundraising

2023/24 was a fantastic year and with your help we raised a huge total for the school!

See below some of our last years fundraising highlights.



200 Club  
**£1,218**



90s Quiz  
**£854**



Christmas Fayre  
**£5,105**



Christmas Jumpers  
**£83.50**



Pre-loved Uniform  
**£1,358**



Wonka Bars  
**£858**



Donuts  
**£373**



Disco & Magic  
**£1,878**



Colour Run  
**£797**



Summer Fayre  
**£7,291**



Rainbow Raffle  
**£403**



Autograph books  
**£180**



And we've had amazing fun doing it! Why not join us this year? Reach out to us on Facebook or grab one of us for a chat in the playground.

**Fundraising Total**  
**£20,478.10**

Thank you for all your support in raising this significant amount which is already making a difference to the school and it's students.



## Autumn Term Dates for your diary

### Whole school

**PTFA Macmillan Coffee morning:** Monday 23<sup>rd</sup> September 9am–10:30am ([click for letter](#))

**PTFA AGM:** Tuesday 24<sup>th</sup> September 7:30pm at The Crown Pub BH10 6JW

**Life Bus:** Wednesday 25<sup>th</sup> September – Wednesday 2<sup>nd</sup> October ([click for letter](#))

**Meet the teacher & see your child's books:** Monday 14<sup>th</sup> October 3.30pm – 4:45pm

**PTFA Adult only Bingo Night:** Friday 18<sup>th</sup> October 7:15pm – 10pm ([click for letter](#))

**PTFA Sponsored Bounceathon:** Monday 21<sup>st</sup> October ([click for letter](#))

**Individual & Sibling School Photos:** Monday 4<sup>th</sup> & Tuesday 5<sup>th</sup> November

**Parents Evening:** Tuesday 5<sup>th</sup> or Thursday 7<sup>th</sup> November (More details to follow)

### Year R

**Parent Outcome:** Thursday 10<sup>th</sup> October 2:30pm in your child's classroom

**Poole Lighthouse Pantomime Trip:** Friday 13<sup>th</sup> December (Details to follow soon)

**Nativity Performances:** Wednesday 11<sup>th</sup> December @ 9.15am OR Thursday 12<sup>th</sup> December @ 2pm. (Details to follow soon)

### Year 1

**Upton Country Park Trip:** Friday 27<sup>th</sup> September ([click for letter](#))

### Year 2

**Parent Outcome:** 2:30pm in your child's classroom: Nightingale: Monday 21<sup>st</sup> October; Barnardo: Wednesday 23<sup>rd</sup> October; Parks: Thursday 24<sup>th</sup> October

### Year 4

**Hawking Class Swimming:** Friday mornings from 13<sup>th</sup> September to Friday 18<sup>th</sup> October.  
**Parent Outcome:** Tuesday 22<sup>nd</sup> October 2:40pm

### Half Term holiday:

Monday 28<sup>th</sup> October – Friday 1<sup>st</sup> November

### Christmas Holiday:

Monday 23<sup>rd</sup> December – Friday 3<sup>rd</sup> January

### INSET Day:

Monday 6<sup>th</sup> January 2025



## Do you need childcare before or after school?

We can help you find breakfast and after school clubs for your child. Many childcare providers and childminders will take your child to school and collect them at the end of the day, providing a complete wrap-around care service.

Most working parents can claim [Tax-Free Childcare](#) to help with costs, whilst your child can complete homework, enjoy sports, or participate in creative activities with their friends. Contact our friendly [FIS team](#) for further help.

T. 01202 093131

E. [familyinformation@bcpcouncil.gov.uk](mailto:familyinformation@bcpcouncil.gov.uk)

W. [bcpcouncil.gov.uk/childcare](http://bcpcouncil.gov.uk/childcare)

Don't miss out - subscribe to our weekly newsletter covering all things family at: [bcpcouncil.gov.uk/emailnews](http://bcpcouncil.gov.uk/emailnews)

BCP Family Information @BCPFamilyInfo @bcpfamilyinformation



## Autumn 1 Home Learning

### Year R

*'Rockin Rhymes'*

Click for [child](#) or [parent](#) leaflets w/c 16<sup>th</sup> September: Go to the local library and find some Nursery Rhyme books to read with a grown up.

**Parent Outcome: Thursday 10<sup>th</sup> October 2:30pm**



### Year 1

*'Where is the Gruffalo'*

Click for [child](#) or [parent](#) leaflets Create a welly walk journal with objects, photos, writing & drawings of what you find.

**Due: Monday 21<sup>st</sup> October**



### Year 2

*'Pride of Hill View Awards'*

Click for [child](#) or [parent](#) leaflets Create an information page about your chosen hero describing why they are your hero.

**Due: Friday 18<sup>th</sup> October**

**Pride of Hill View Awards: Nightingale: Monday 21<sup>st</sup> October; Barnardo:**

**Wednesday 23<sup>rd</sup> October; Parks: Thursday 24<sup>th</sup> October. 2.30pm (Enter via Y3 side gate)**



### Year 3

*'Castles and Dragons'*

Click for [child](#) leaflet

Research an English Castle and Make a poster or model of the castle.

**Due: Wednesday 16<sup>th</sup> October**



### Year 4

*'Toot...and Come in'*

Click for [child](#) or [parent](#) leaflets Keep a series of diary entries in the role of an Ancient Egyptian explorer.

**Due: Friday 18<sup>th</sup> October**

**Parent Outcome: Tuesday 22<sup>nd</sup> October 2:40pm**



### Year 5

*'Chemical Chaos?'*

Click for [child](#) or [parent](#) leaflets

Use your scientific skills and knowledge to separate mud from water.

**Part 2 Due: Monday 21<sup>st</sup> October**



### Year 6

*'Mr Nobody'*

Click for [child](#) leaflet

Find out about the famous Scientist Charles Darwin and present your findings in a method of your choice.

**Due: Monday 14<sup>th</sup> October**



## STARTING SCHOOL SEPTEMBER 2025

Hill View Primary School is delighted to invite families with children starting school in September 2025 to our open sessions. There is no need to book, just come along and meet us!

Thursday 3<sup>rd</sup> October 2024 (4:00-4:30pm)

Thursday 24<sup>th</sup> October 2024 (4:00-4:30pm)

Monday 11<sup>th</sup> November 2024 (4:00-4:30pm)

Thursday 9<sup>th</sup> January 2025 (4:00-4:30pm)

If you are unable to attend an open session, we can organise a tour for you. Please email [office@hillview.bournemouth.sch.uk](mailto:office@hillview.bournemouth.sch.uk) or call 01202 514109.



## Travel to school (BCP Council Active Travel)

We hope that traveling actively to school will be your first choice as most children live 1.5 miles or less from their primary school. However, we understand that it isn't always possible.



If you need to drive, please park considering ensuring that you don't leave your engine running. If you are able, then please park 5 – 10 minutes away from the school and walk or scoot the last section of your journey.

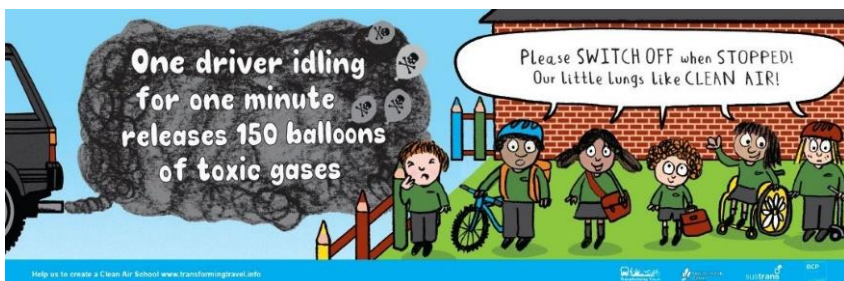
The physical and mental health benefits of fresh air and regular exercise that result from choosing these activities are well known, but teachers often report that children actually focus and learn better at school if they've been active. Active travel also reduces traffic congestion, improves local air quality and helps to make the roads around schools safer and calmer.

Parking restrictions are outside every school: inconsiderate parking is dangerous and reduces the safety of those that are walking, scooting, cycling or using a mobility aid. Failure to comply with the road markings could result in the issue of a fixed penalty notice. [The Highway Code - Road markings - Guidance - GOV.UK \(www.gov.uk\)](https://www.gov.uk/guidance/the-highway-code-road-markings-guidance)

### Idling engines and keeping the air clean

Children are particularly susceptible to the impact of air pollution as they breathe faster than adults and they tend to be closer to the height of exhaust emissions. Exposure to air pollution puts them at greater risk of developing asthma and increases the frequency of asthma attacks. Air pollution from idling engines can drift across the school grounds where children are playing or taking part in sports activities.

**Do not leave your engine running when you are parked. 150 balloons' worth of toxic gases are released from the exhaust every 60 seconds.**



[Parentkind.org](https://parentkind.org)



## Navigating parenthood PARENTKIND WEBINARS

- How to exercise more without really trying  
24/01/2024 | 7.30 - 8.15pm
- An introduction to autism  
06/05/2024 | 7.30 - 8.30pm
- A nutritionist's guide to dealing with fussy eating  
26/01/2024 | 12.30 - 1.50pm
- Stress management  
07/03/2024 | 10.00 - 11.00am
- Helping your child achieve in school  
30/01/2024 | 7.30 - 8.30pm
- Neurodiversity in children matters – behaviour management for SEN children  
11/05/2024 | 7.30 - 8.30pm
- Building resilience  
06/02/2024 | 10.00 - 11.00am
- Supporting your child's mental health  
20/05/2024 | 7.30 - 8.30pm
- Helping your child succeed in KS1 English  
09/02/2024 | 12.30 - 1.50pm
- Helping your child succeed in KS2 English  
22/03/2024 | 12.30 - 1.50pm
- Keeping your child safe online  
28/02/2024 | 7.30 - 8.30pm

## MENTAL HEALTH SUPPORT TEAM (MHST) IN SCHOOLS MEET YOUR EDUCATION MENTAL HEALTH PRACTITIONER (EMHP)

JENNI PHILIPPS



### WHAT IS AN EMHP?

An EMHP is an Educational Mental Health Practitioner. We are here to help children and young people and their school community with their mental health and wellbeing.

### WHAT DOES AN EMHP DO?

We work 1-1 with students who need extra mental health support. We also offer staff training and support with difficulties within your classroom as well as running groups for students, parents and carers. We can send out information for you to help your students' mental health via email on a regular basis.

### HOW DO I FIND OUT MORE?

Send us an email: [dhc.mhsteam.bcp@nhs.net](mailto:dhc.mhsteam.bcp@nhs.net)

Give us a ring: 01202 129150



@DORSETHMST

### VISIT OUR WEBSITE

[bit.ly/dorset\\_mhst](https://bit.ly/dorset_mhst)



NHS  
Dorset HealthCare University  
NHS Foundation Trust



Dorset HealthCare University  
NHS Foundation Trust

## ParentLine 5-19

Confidential text messaging advice service for parents and carers of children aged 5-19.

Message us for confidential advice on

**07312 263131**

to chat with a member of the School Nursing team



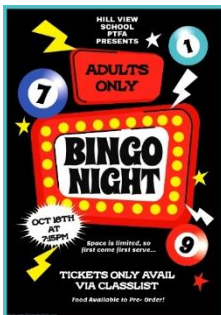
## PTFA Update

We hope all of your children have enjoyed the first full week back at school. Thank you for the incredible amount of pre-loved Uniform donated to the office and for continuing to support us with sales of both the pre-loved and new. We have our Annual General Meeting coming up on Tuesday 24 September (details below). We have had some people come forward (thank you for that) but still need more interest in the Chair and Co-Chair positions. Please feel free to message us for an informal chat via email or Facebook. The more help, the better 😊 Alternatively, you could pop along to our Coffee Morning on 23<sup>rd</sup> September.

### 2024 Events

We are raring to go with a new exciting calendar this year!

	<b>UPCOMING EVENTS</b>		<b>UPCOMING EVENTS</b>
<b>SEPT 23RD</b>	Macmillan Coffee Morning	<b>FEB 24/ 25TH</b>	DISCO'S! ALL YEARS
<b>OCT 11TH</b>	Non-Uniform Day Donation towards Bingo Night	<b>MAY 10TH</b>	COLOUR RUN
<b>OCT 18TH</b>	ADULT ONLY BINGO NIGHT!	<b>JUNE 20/27TH</b>	Non-Uniform Days Donation detts to follow....
<b>OCT 21ST</b>	Back by Popular Demand... BOUNCEATHON!	<b>JUNE 27TH</b>	FAMILY FESTIVAL!



HILL VIEW SCHOOL PTFA PRESENTS  
ADULTS ONLY  
**BINGO NIGHT**  
OCT 18TH AT 7.30PM  
Space is limited, so first come first serve...  
TICKETS ONLY AVAIL VIA CLASSLIST  
Food available to pre-order



HILL VIEW PRIMARY SCHOOL  
BOUNCEATHON  
*Sponsored Bounce*  
21ST OCT 2024  
WHOLE SCHOOL EVENT RAISING MONEY FOR OUR SCHOOL.

[click here](#) to see the Adult Bingo Night Letter  
[click here](#) to view the Bounceathon Letter

### MacMillan Coffee Morning [\(Click here for letter\)](#) Monday 23<sup>rd</sup> September, 9am-10:30am School North Hall

Come and join us for a drink and social. It would also be a great way to meet us if you're interested in joining our friendly team.

### PTFA AGM: Tuesday 24<sup>th</sup> September 7:30pm at The Crown Pub BH10 6JW

Our AGM is fast approaching. As our children grow and in-turn leave Hill View, sadly so do our P.T.F.A. Therefore, we really need new faces to continue the good work for our school and children. Please email us at [hillview.ptfa@hotmail.co.uk](mailto:hillview.ptfa@hotmail.co.uk) to register your interest prior to the meeting. If you'd like an informal chat, please don't hesitate to pull one of us aside or drop us a message via [Facebook](#), or [email](#)

Please click here to view [last year's AGM Meeting minutes](#) and this year's [Agenda](#).

### Classlist

If you haven't already done so, please [sign up to Class List](#). This app helps keep track of events and enables you to book tickets and pay for PTFA events.

Thank you for your support.

**Rachel, Sam, Alistair, Michelle, Lorraine, Jen, Jo & Nickie**  
PTFA Committee Members

## Uniform Preloved & NEW!

We have a wide range of stock available of new Uniform to purchase from us. Please see our updated price list below or by [clicking here](#) to view on the school website.



**Hill View Uniform Price List**  
Available to purchase from the P.T.F.A.

We can now send you a link for payment with easy collection from the school office

					
£13.00	£8.00	£15.00	£5.00	£10.00	£17.00

Item	Sizes	Price
Cardigan	22" (3-4yrs), 24" (4-5yrs), 26" (5-6yrs), 28" (7-8yrs), 30" (9-10yrs), 32" (11-12yrs), 34" (13yrs), 36" (15 Adult)	£15.00
Fleece	3-4yrs, 5-6yrs, 7-8yrs, 9-10yrs, 11-12yrs, 13yrs	£17.00
Sweatshirt	24" (4-5yrs), 26" (5-6yrs), 28" (7-8yrs), 30" (9-10yrs), 32" (11-12yrs), 34" (13yrs), 36" (15 Adult)	£13.00
PE T-Shirt	3-4yrs, 5-6yrs, 7-8yrs, 9-10yrs, 11-12yrs, 13yrs	£8.00

All profits made from sales go back into the school to benefit all pupils

To place orders, please contact us by Email: [hillview.ptfa@hotmail.co.uk](mailto:hillview.ptfa@hotmail.co.uk) or our Facebook page: Hill View Primary School P.T.F.A. Cash and Card payment accepted

We continue to have stock in the main office for pre-loved items. An honesty box is at the reception desk. We only accept cash for pre-loved.



**'Pre-Loved' Uniform Price List 2024**  
Available to purchase from the rail in the school office

Items	Price (Cash)
Book Bags	£1 EACH
PE T-Shirts	
Pinafores	
Shorts (all inc PE)	
Skirts	
Shoes (& Plimsols)	
Summer Dresses	£4 EACH
Ties	
Trousers	
Cardigans / Sweatshirts	£4 EACH
Coats / Fleece	
White Shirts	2 for 50p

Cash Payment: There is an honesty box in the school office

Donations: We are always pleased to receive uniform donations. These can be left under the clothes rail

Thank you for your support

All profits made from sales go back into the school to benefit all pupils

If you have any clean, good quality items for donating, please leave in a bag under the existing clothes rail. All donations are greatly received.  
**Thank you.**

### ASDA Rewards for our school! [\(Click for letter\)](#)

Do you shop at Asda and have the rewards app? Please could you log in to the app and add the PTFA as your chosen school for the cash pots. Make sure you search 'Hill View Primary school'.

Between 2nd September and 30th November 2024, every time customers shop with Asda using their Rewards app, the supermarket will donate 0.5% of the value of their shop to their chosen primary school. And that's not all. For every customer who chooses our school, Asda will put £1 into the school's Cashpot, and another £50 when our school's first opted-in customer spends in-store or online!

For more details, visit [www.asda.com/cashpotforschools](http://www.asda.com/cashpotforschools)

### How to reach us:

Email: [hillview.ptfa@hotmail.co.uk](mailto:hillview.ptfa@hotmail.co.uk)  
Facebook: [www.facebook.com/hillview.primaryptfa/](http://www.facebook.com/hillview.primaryptfa/)  
Classlist: <https://classlist.page.link/6d9FBED11FcyAURc7>

# THE BOURNE ACADEMY



**Open Evening - Wednesday 25 September 2023**

**6.00pm - 8.00pm**

**Principal talks at 6.15pm & 7.15pm**



**Join us to view the facilities, meet with staff, enjoy refreshments and the Principal's presentation. Experience our vibrant and welcoming atmosphere.**

[@BourneAcademy](#) [@TheBourneAcademy](#) [@TheBourneAcademy](#)

The Bourne Academy, Hadow Road, Bournemouth, Dorset, BH10 5HS.

admin@thebourneacademy.com | 01202 528554 | www.thebourneacademy.com

## This week's WIZARDS



YR – Otto P  
YR – Emily E  
YR – Alexis L-B  
Y1 – Daisy W  
Y1 – Albi B

Y1 – Whole of Kusama Class

Y1 – Zara D  
Y1 – Henry F  
Y1 – Sye G

Y2 – Harrison H

Y2 – Arlo S  
Y2 – Leroy M  
Y2 – Luke A  
Y2 – Jack D

Y3 – Grace D

Y3 – Florence BP

Y4 – James M

Y4 – Perry M

Y4 – Zayden C

Y5 – Harry S-H

Y5 – Rosie E

Y6 – Esme J

Y6 – Oscar L

Y6 – Simay G



## Kindness Cup Awards



**Year 1:** Monet Class  
**Year 2:** Barnardo Class  
**Year 3:** Simmonds Class  
**Year 4:** Hawking Class  
**Year 5:** Lloyd Webber Class  
**Year 6:** Pankhurst Class



## Phonics Stars



YR – Semilore T  
Y1 – Otis V  
Y2 – Thea C

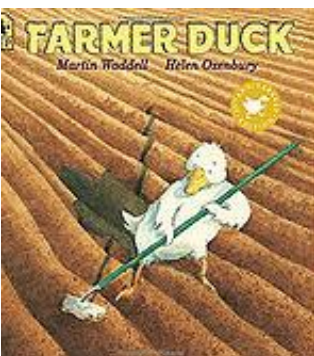


## Recommended Read Book of the week (YR)

### Farmer Duck

**By Martin Waddell & Helen Oxenbury**

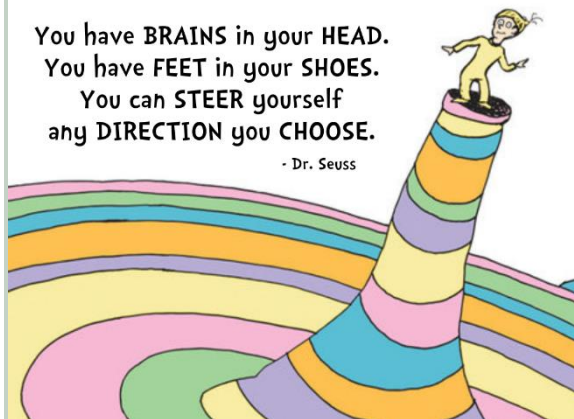
The story of a hardworking duck, who has the very bad luck of living with a lazy farmer. The duck cooks and cleans, tends the fields and cares for the other animals on the farm – and all while the farmer lies in bed! That is until the day the animals decide to take action ... and come to the rescue with a simple, but heroic plan.



# OH! THE PLACES YOU'LL GO!

You have BRAINS in your HEAD.  
You have FEET in your SHOES.  
You can STEER yourself  
any DIRECTION you CHOOSE.

- Dr. Seuss



# OCTOBER HALF-TERM SPORTS & PLAY CAMPS HILL VIEW PRIMARY SCHOOL

## OUR TEAM

Enhanced DBS Checked, Staff on the Update Service, Qualified in Sports & Childcare, First Aid Trained & Safeguarding Children Trained. We are always putting the children's welfare first!

## TIME

09.00 - 15.00 with early drop off available from 8.00 & late pick-up until 17.30.

## VENUES

**NEW!** Hill View Primary School  
Stourfield Junior School  
BCS Preparatory School  
The Epiphany School

## ACTIVITIES

Our engaging programs have 3 areas of play: Sport (football, Gymnastics) Play (board games, lego, outdoor exploration) and Craft (pumpkin art, masks & biscuit decorating) Plus, we're thrilled to bring in Creature Teachers, adding a unique, hands-on educational experience with real-life animals with an October twist!

## DATES

Monday, 28th October - Friday, 1st November. BCS Prep Starting from Thursday 24th October.

## AGES

3 - 13 years old (3 year olds only allowed to book on at BCS Prep)



**The Creature Teachers**

**FROM  
£27.50 PER  
DAY**

**TAX-FREE  
CHILDCARE  
ACCEPTED**

**CHILDCARE  
VOUCHERS  
ACCEPTED**

## BOOKINGS & CONTACT

[www.foundation-play.com](http://www.foundation-play.com) or scan the QR code to the right.

E: [dorset@foundation-sports.com](mailto:dorset@foundation-sports.com)

IG: @fsportsandplay

Phone: 01202 007785



SCAN ME



**"OUR AIM IS TO ENRICH CHILDREN'S LIVES THROUGH ENJOYMENT, ENGAGEMENT, AND ENTHUSIASM. EVERYONE ACTIVE, ALL THE TIME" JOSH, MANAGING DIRECTOR**

## Schedule Example

08:45 - 09:15: Arrival, sign-ins, and warm-up with free play using sports equipment, board games, and interactive activities.

09:15 - 09:30: Circle time to kick off the day, where we introduce the exciting activities ahead.

09:30 - 11:00: Get ready for a carousel of sports! Meanwhile, inside, enjoy biscuit decorating, face painting, and fun craft activities.

11:00 - 11:15: Time to refuel! Snack break to keep energy levels up.

11:15 - 12:15: Age-group matches in sports or dive into October-themed fun with water-based painting, pizza making, and creating your very own spooky masks.

12:15 - 12:45: Lunch break! Enjoy hot meals and a chance to relax with friends.

12:45 - 13:15: Free-play continues with outdoor exploration, playground adventures, and more sports equipment fun.

13:15 - 14:45: The afternoon brings a football tournament and nerf wars, plus options for gymnastics, pumpkin carving, and showing off your skills in a talent show!

15:00: End of day celebration with certificates and collections.

## Childcare Vouchers & Tax-free Childcare

Ofsted Reg Number: 2652421

Please use your child's first initial & surname as a reference when paying with vouchers.

## Amaze Dayz - The Creature Teachers

The Creature Teachers will be bringing a range of exotic and domestic animals to our holiday clubs for the children to hold and pet! Mon Epiphany & Hill View, Tue at BCS & Wed at Stourfield Junior School.

