

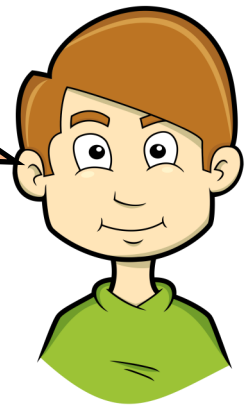
# Dragons and Castles

**Homelearning due: Wednesday 16th October**

Your historical challenge over the next few weeks is to research an English castle of your choice, focusing on the features and story behind that castle.

To present your research you could:

- Create a poster on the computer or by hand
- Create a 3D model of the castle including labels
- Sketch and label a picture of the castle



## Top Tips

- Remember to be as creative as possible
- You can use a variety of materials and mediums to create your research but it needs to be exciting, colourful, engaging and enjoyable.
- Aim for 5 star quality.

Please send your home learning in by :  
**Wednesday 16th October 2024**

At school, the children have been tasked by Lady Mary Bankes to look after the keys to Corfe Castle. Will Corfe Castle be safe? Only time will tell...

We can't wait to see what you have all been up to and to share one another's amazing work. We will be sharing each others work in the last week of our project.