



Hill View Primary School

Reach For The Stars

Newsletter No. 13 w/c 02/12/24



Coming Up w/c 9th December

- Tuesday 10th** – Y3 & Y4 Carol concert at St Thomas's Church. 1:45pm
- Tuesday 10th** – Y1 Teddy Bear's Picnic (Bring a small teddy to school)
- Wednesday 11th** – Y6 Pankhurst Tortilla baking
- Wednesday 11th** – YR Nativity Performance to parents 09:15. Please enter via Y3 side gate
- Thursday 12th** – Y6 Luther King Tortilla baking
- Thursday 12th** – YR Nativity Performance to parents 2pm. Please enter via Y3 side gate
- Friday 13th** – Y4 Attenborough Class Swimming
- Friday 13th** – Y6 Sharman Tortilla baking
- Friday 13th** – YR Pantomime Trip
- Friday 13th** – Y3 Simmonds 100 square reward – wear Pyjamas, bring a teddy & extra snack

Reminders

- Year R** – **Biscuit Making** £2.50 payment due Friday 17th January [via wisePAY](#)
- Year 2** – **SeaCity Museum Trip** £17.50 payment due Friday 13th December
- Year 6** – **Fort Purbrook** Next instalment due: Monday 3rd February. £50.00 [via wisePAY](#)

Pupil Absence

All absences must be reported to the school office each morning that your child is off:
Tel: 01202 514109
E-mail: office@hillview.bournemouth.sch.uk

We are required to record the **Reason for children's absence**. We need specific details rather than just "unwell". [Please let us know your child's specific symptoms](#) e.g. temperature, sore throat, vomiting etc. Providing this detail will prevent us calling you.

Please note that if your child has any sickness and/or diarrhoea, they must stay away from school for 48 hours from their last bout.

Please refer to the [NHS website](#) for further advice regarding whether to keep your child away from school if they are unwell.

School Travel Survey

In case you missed this on last week's newsletter, the Road Safety Team and the Sustainable Travel Team at BCP Council are currently working closely with our school to initiate a School Travel Plan.

A School travel plan (STP) shows a commitment to sustainable and active travel and helps to increase the safety of the school community.

We are asking pupils and all parents/carers to complete an online survey to help us document travel behaviours and patterns so that concerns and goals can be highlighted.

It is important to address climate and health concerns in our community. Many short journeys to school are made by car which could be made more sustainably. The Department for Education (DfE) have asked schools to encourage and impact the way that pupils travel to school which can provide both health and educational benefits to children.

Please find below the survey links for:

Pupils:

<https://www.surveymonkey.com/r/HillViewPrimaryAcademyPupilHansUpSurvey2024>

Parents and Guardians:

<https://www.surveymonkey.com/r/HillViewPrimaryAcademyParentGuardianTravelSurvey2024>

The deadline to complete the surveys will be Sunday 15th December.

Thank you for your help and support. We look forward to sharing the results and initiating our new School Travel Plan.

Miss Buckland
Headteacher

Have your say

Home to School Transport Policy



Parking on zigzags

Please can we remind parents/carers not to park and/or wait on yellow zigzags outside school. These lines indicate the length of the road where stopping or waiting is strictly prohibited. Where there is an upright sign, there is a mandatory prohibition of stopping and/or waiting during the times shown.

Thank you



Arts Council Christmas Competition (Y1 – Y6)

The school Arts Council will be running an art competition this term. For the competition, they ask that children create a piece of artwork around the following themes for their year group;

- Year 1 – Snow globe
- Year 2 – Christmas tree
- Year 3 – Santa's workshop
- Year 4 – Elves
- Year 5 – Snow scene
- Year 6 – Reindeers



Children can use any materials they like to create their artwork. This could be in the form of a painting, sketch or even a sculpture. The competition is optional for children to enter.

Entries should be brought to school by Monday 16th December.
Good luck!

Christmas Carols

Y1 and Y2 Children will be singing Christmas Carols to parents/carers on the playground on **Wednesday 18th December at 2:40pm**

Years 3, 4, 5, and 6 will be singing at St Thomas' Church on the following dates:

Y3 & Y4 – Tuesday 10th December 1:45pm start

Y5 & Y6 – Tuesday 17th December 1:45pm start

The carols usually last about an hour.

All children will be walking back to school at the end. No parents will be allowed to take their child directly from the church.

If you are able to help walk children to and from the church, please let your child's teacher know.

Thank you.
Mrs Price

Autumn Term Dates for your diary

Whole school

Christmas Lunch & Christmas Jumper Day

Christmas lunch will be served on **Wednesday 18th December**. If your child would like this meal, please order via the Forerunner website in the usual way by **Monday 9th December**.

Year R

Nativity Performances: Wednesday 11th December @ 9.15am OR Thursday 12th December @ 2pm. ([Click for letter](#))

Christmas Party: Thursday 19th December
Non-uniform day (appropriate partywear) & bring a party snack (NO NUTS)

Year 1

Christmas Party: Tuesday 17th December
Non-uniform day (appropriate partywear) & bring a party snack (NO NUTS)

Year 2

Christmas Party: Thursday 19th December
Non-uniform day (appropriate partywear) & bring a party snack (NO NUTS)

Year 3

Christmas Party: Friday 20th December
Non-uniform day (appropriate partywear) & bring a party snack (NO NUTS)

Year 4

Attenborough Class Swimming: Friday mornings from 15th November to 20th December.

Christmas Party: Friday 20th December
Non-uniform day (appropriate partywear) & bring a party snack (NO NUTS)

Year 5

Christmas Party: Wednesday 18th December
Non-uniform day (appropriate partywear) & bring a party snack (NO NUTS)

Year 6

Christmas Party: Friday 20th December
Non-uniform day (appropriate partywear) & bring a party snack (NO NUTS)

Christmas Holiday:
Monday 23rd December – Friday 3rd January

INSET Day:
Monday 6th January 2025

Consultation on School Admission Arrangements 2026-27

You are invited to review and comment on the proposed school admissions arrangements for the following academies in Bournemouth, Christchurch & Poole for 2026-27:

DfE	School name	Proposed changes from 2025 to 2026
839-3686	Christ the King Catholic Primary School	reduction in PAN; introduce priority within 2 miles from school
839-3611	St Joseph's Catholic Primary School, Poole	introduce priority within 2 miles from school
839-3612	St Mary's Catholic Primary School, Poole	introduce priority within 2 miles from school

Full details of the consultation can be found [here](#).

Comments in response are invited from interested parties. Responses can be submitted either by email to schoolsadmissionpolicy-mailbox@devon.gov.uk or in writing to School Admissions Consultation, Devon County Council, Room L60, County Hall, Exeter EX2 4QG by Friday 5 January 2024.

All responses will be shared with schools and considered.

This consultation ends 10 January 2025

A list of all schools, their proposed [Published Admission Number and the changes that are proposed](#) is available [here](#).

School admissions policy documents are published at [here](#).

The catchment [areas for schools](#) are published [here](#).



Is your child registered for **SCHOOL MILK?**

Child UNDER 5 Every child under the age of five is entitled to free school milk. Simply register your child online.

Child OVER 5 Every child over the age of five is entitled to milk at a subsidised cost of around £30 per term. Register your child and pay online.

Children in receipt of benefits-based free school meals are eligible for free school milk. Speak to the school for further information.

Free milk for under 5s is funded by the Department of Health and for over 5s is subsidised by DfE.

REGISTER YOUR CHILD TODAY

Register online www.coolmilk.com



Need help? Send us a message at www.coolmilk.com/contact or give us a call on 0800 321 3248

© 2023 Cool Milk Ltd. All rights reserved.

Autumn 2 Home Learning Reminders

Year R

Christmas 2024

Click for [child](#) or [parent](#) leaflets

Task 2: Write a letter to Santa telling him what you would like for Christmas. **Parent note:** You could help your child to sound out simple words to spell. You could also cut out pictures from magazines and catalogues to stick on their letter.

Year 1

Hill View

Sandwich Bar



Click for [child](#) or [parent](#) leaflets

Design and make a healthy sandwich for a family member. Add photos and write a recipe/instructions.

Due Friday 13th December

Year 2

The Troll

Click for [child](#) or [parent](#) leaflets

Record findings from a home treasure hunt.



- Write a poem about the troll
- Create a recipe for the troll's cookery book
- Make an advert for the troll's new cookery book

Due w/c 16th December

Year 3

The Iron Giant

Click for [child](#) or [parent](#) leaflets

Create a map of magnetic materials around your house.



Due Wednesday 11th December

Year 4

The Land of Fire & Ice



Click for [child](#) or [parent](#) leaflets

Completed

Year 5

The Dark Ages

Click for [child](#) Leaflet



Produce a visual aid or an artefact linked to the Anglo-Saxons

Due Monday 9th December

Year 6

The Curse of the Maya

Click for [child](#) or [parent](#) leaflets

Research Maya food and either;

- Produce a fact file
- Design a menu for a Maya restaurant



Due: Monday 16th December

Christmas Jumper/ Clothing Sale

Pre-loved Christmas clothing is now out in the office!
Please leave any donations for the PTFA in the Christmas tin at the front desk.

Thank you.



Year R Nativity

The PTFA will be selling mince pies and drinks on both performance days. This will be cash only, so please bring some coins.



Water Bottles & Coats

We have noticed that a lot of children are coming to school without water bottles. To ensure your child stays hydrated throughout the day, please pack a named water bottle in their bag.

Children also have playtimes outside, even when it's cold. Please make sure they have a suitable, clearly named coat with them during the colder months.

Thank you.

Lost Property



Please ensure children's clothes and personal items (water bottles, lunch boxes, coats etc) are clearly labelled. There is a huge mountain of unnamed jumpers and cardigans (nearly 60, which is 10% of the school!) that we are unable to return to children. A biro is a quick and simple way to label clothing that seems to last through the washes.

Any unclaimed lost property at the end of the day on Friday 20th December will be donated to the PTFA or appropriately recycled or disposed of.

Thank you for your help.



Uniform Preloved & NEW!

We have a wide range of stock available of new Uniform to purchase from us. Please see our updated price list below or by [clicking here](#) to view on the school website.

Hill View Uniform Price List
Available to purchase from the P.T.F.A.

All profits made from sales go back into the school to benefit all pupils.

To place orders, please contact us by Email: hillview.ptfa@hotmail.co.uk or our Facebook page: Hill View Primary School P.T.F.A. Cash and Card payment accepted

We continue to have stock in the main office for pre-loved items. An honesty box is at the reception desk. We only accept cash for pre-loved.

'Pre-Loved' Uniform Price List 2024
Available to purchase from the rail in the school office

Items	Price (Cash)
Book Bags	
PE T-Shirts	
Pinafores	
Shorts (all inc PE)	£1 EACH
Skirts	
Shoes (& Plimsols)	
Summer Dresses	
Ties	
Trousers	
Cardigans / Sweatshirts	£4 EACH
Coats / Fleecees	
White Shirts	2 for 50p

All profits made from sales go back into the school to benefit all pupils.

Cash Payment: There is an honesty box in the school office
Donations: We are always pleased to receive uniform donations. These can be left under the clothes rail
Thank you for your support

If you have any clean, good quality items for donating, please leave in a bag under the existing clothes rail. All donations are greatly received.
Thank you.

Classlist

If you haven't already done so, please [sign up to Class List](#). This app helps keep track of events and enables you to book tickets and pay for PTFA events.

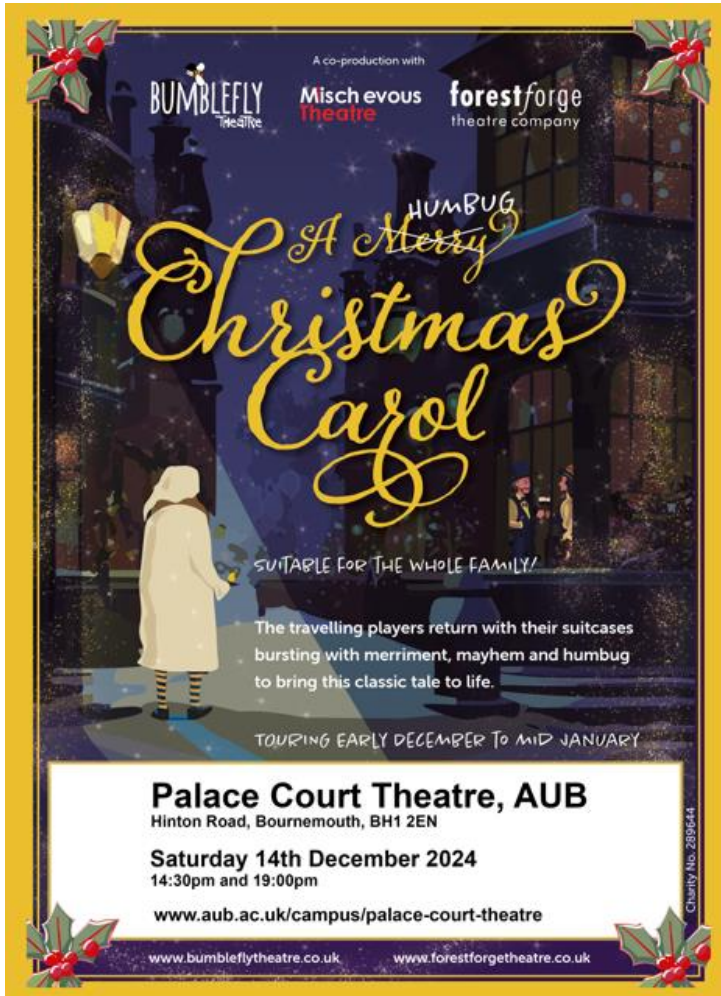
How to reach us:

Email: Hillview.ptfa@hotmail.co.uk
Facebook: www.facebook.com/hillview.primaryptfa/
Classlist: <https://classlist.page.link/6d9FBeD11FcyAUrCZ>

A Christmas Carol

The Palace Court Theatre in Bournemouth is hosting a Christmas show for the first time in over 35 years. As AUB brings this iconic Art Deco theatre back to life, the local community are invited to come on inside for some festive cheer on **Saturday 14 December**. Tickets are very reasonable priced at just £6 for under 18's and £12.50 for a standard ticket price.

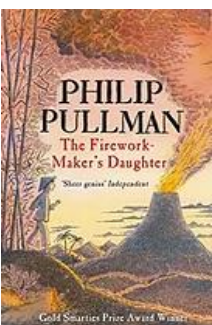
<https://aub.ac.uk/latest/forest-forge-theatre-co-presents-a-christmas-carol>



Recommended Read Book of the week (Y4)

The Firework Maker's Daughter – Philip Pullman

What Lila wants to be more than anything else in the world is . . . a Firework-Maker! But firework-making is not just about being able to make Crackle-Dragons and Golden Sneezes. There is also one special secret: every Firework-Maker must make a perilous journey to face the terrifying Fire-Fiend! Not knowing that she needs special protection to survive the Fire-Fiend's flames, Lila sets off alone. Her friends, Chulak and Hamlet - the King's white elephant - race after her. But can they possibly reach her in time?



This week's WIZARDS



YR – Teo J-V
 YR – Not provided
 YR – Not provided
 Y1 – Elea Y
 Y1 – Chloe B
 Y1 – Antonio A
 Y2 – Poppy H-R
 Y2 – Charlotte-Rose B
 Y2 – Harry T
 Y3 – Kikachi M
 Y3 – Lucas C
 Y3 – Ariana S
 Y4 – Isaac F
 Y4 – Imogen W
 Y4 – Olivia R
 Y5 – Lexi F
 Y5 – Ella B
 Y5 – Not provided
 Y6 – Isabela F
 Y6 – Erin B
 Y6 – Not provided



Kindness Cup Awards

Year 1: Monet
 Year 2: Parks
 Year 3: Murray
 Year 4: Attenborough
 Year 5: Lloyd Webber
 Year 6: Pankhurst



Phonics Stars

YR – Not provided
 Y1 – Arlo G
 Y2 – Maggie D



Attendance Cup Winners

(30th September to 6th December)



YR - **DONALDSON** CLASS 96.06%

KS1 - **BARNARDO** CLASS 96.87%

Lower KS2 - **JOHNSON** CLASS 97.72%

Upper KS2 – **LUTHER KING** Class 98.17%

